

# Cameron Carbon

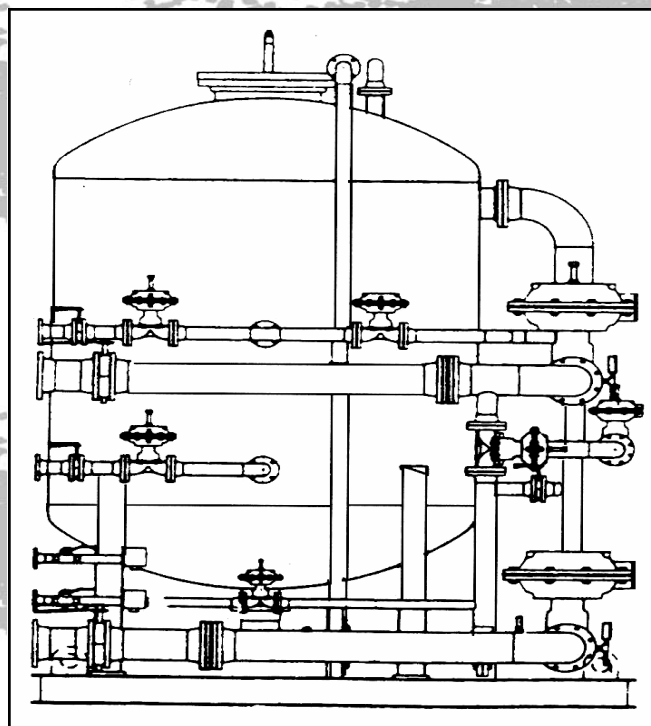
INCORPORATED

Activated Carbon  
& Related Technology

P.O. Box 995 Havre de Grace MD 21078 USA  
Toll Free: (800) 394-6844  
Tel: +1 (410) 942-0240 • Fax: +1 (410) 942-0242  
www.cameroncarbon.com • sales@cameroncarbon.com

## High Pressure Steel Filter Vessels

Electric welded, low carbon steel construction, vertical pressure vessels on legs  
Designed for 100 psig working pressure and factory tested  
Lined with 6 mils DFT phenolic (rubber, epoxy, galvanized & fiberglass available)  
Exterior rust inhibiting primer & top coat or hot dip galvanized  
30" dia. and less have two 4 x 6 inch hand holes in the top head and lower side shell  
36" - 60" dia. have an 11 x 15 manway in top head & 4 x 6 inch hand hole in lower side shell  
66" dia. and larger have two 11 x 15 inch manways, one in top head and one in lower side shell  
Standard connections are NPT threaded full couplings (flanged connections when required)  
36" dia. and smaller equipped with an outlet distributor hub  
42" dia. and larger include header lateral distributor system  
Vessels include inlet diffuser for even distribution and prevent media loss when backwashing  
ASME Code pressure vessels fabricated & stamped in accordance with ASME Sec. 8, Div. 1  
Various types of activated carbon and other media  
Additional diameters, sideshell lengths & custom designs  
Optional flat base, 50 psig forkliftable skid mounted configuration



This information has been gathered from standard reference materials and/or test procedures and is believed to be true and accurate. It is offered solely for your consideration and verification. None of the information presented shall be construed as constituting a warranty or representation, expressed, written, or implied, for which we assume legal responsibility or that the information or goods described is fit for any particular use either alone or in combination with other goods or processes, or that its use does not conflict with existing patent rights. No license is granted to infringe on any patent rights or practice any patent invention.

# Cameron Carbon

INCORPORATED

Activated Carbon  
& Related Technology

P.O. Box 995 Havre de Grace MD 21078 USA

Toll Free: (800) 394-6844

Tel: +1 (410) 942-0240 • Fax: +1 (410) 942-0242

www.cameroncarbon.com • sales@cameroncarbon.com

Model	Flow (gpm)	EBCT (min)	Diameter A (in)	Sideshell B (in)	OAH (in approx)	Carbon (lb)	Full Vessel (lb)
LC2460HP-450	15	7.5	24	60	75	450	700
LC2472HP-525	15	8.9	24	72	87	525	900
LC3060HP-675	25	6.7	30	60	79	675	1,050
LC3660HP-1000	35	7.5	36	60	84	1,000	1,650
LC4260HP-1400	50	7.0	42	60	88	1,400	2,475
LC4860HP-1850	60	7.8	48	60	95	1,850	2,900
LC5460HP-2350	80	7.4	54	60	97	2,350	3,650
LC6060HP-3000	100	7.6	60	60	103	3000	4800
LC6672HP-4200	115	9.2	66	72	117	4,200	6,600
LC7272HP-5000	150	8.4	72	72	119	5,000	7,700

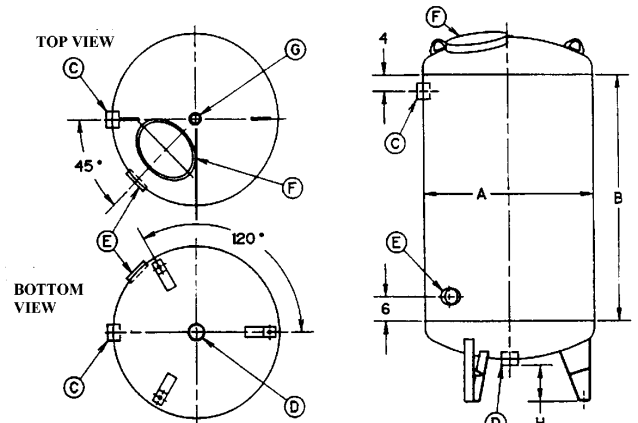
Flow rate based upon hydraulic loading rate of 5 gpm/ft<sup>2</sup> bed face area.

EBCT = Empty Bed Contact Time

Carbon and full vessel weights are approximate and based on average media bulk density of 30 lb/ft<sup>3</sup>

*Optional 50 psig flat base forkliftable skid mounted units, add 6" to sideshell length & change model number from "HP" to "FB" (example: LC3660HP-1000 becomes LC3666FB-1000)*

Dia. (in)	C & D Fittings	E Opening	F Opening	G (in) Spud	H (in) Distance
24, 30	2" NPT	4" x 6" handhole	4" x 6" handhole	1.25	6
36, 42	3" NPT	4" x 6" handhole	11" x 15" manway	2	9
48, 66, 72	4" NPT	4" x 6" handhole	11" x 15" manway	2	12



G = VENT  
C = INLET  
D = DRAIN  
E & F = ACCESS